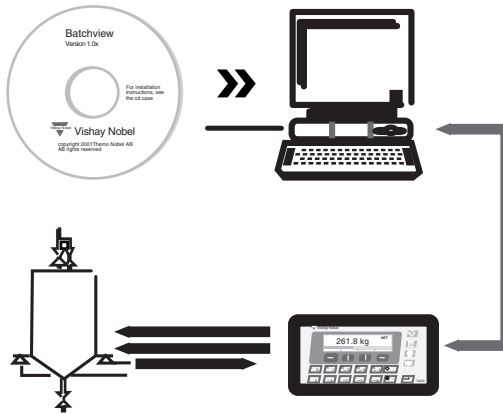


**PC Software BatchView**



**FEATURES**

- Monitoring batching (complete overview over the full batching sequence)
- Control of batching sequence (change setpoints, start, stop, halt, restart...)
- Save "batch data" in file on PC (setpoints, batch size, number of batches...)
- Load "batch data" from one (of many) previously saved "batch data" file
- Log batching activities in text file formatted for easy import into spread or data base
- Easy access to and overview over all accumulated weights
- Print accumulated weights on system printer
- Two levels of password protection

**DESCRIPTION**

BatchView is a PC software for remote monitoring and control of the batching functions in Nobel's weight indicator TAD 3 with batching option. It runs under Windows 95/98/NT4/Me/2000/XP.

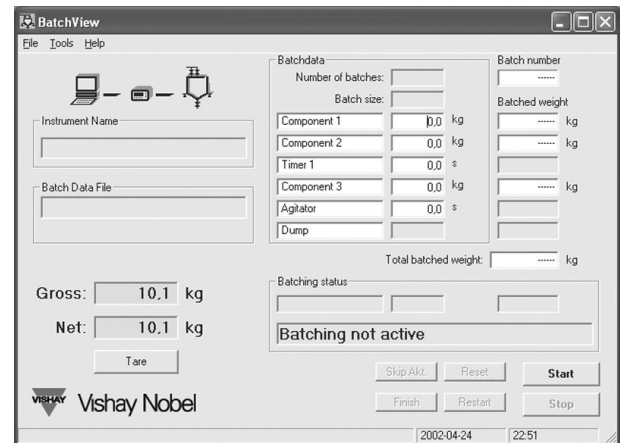
Functionally, BatchView provides an easy way to run and monitor a batching sequence in TAD 3 from the PC. Batch data (setpoints, batch size, number of batches) can easily be changed directly in the PC or selected and downloaded from any of a number of previously stored "batch data" files. This

is especially useful when using a number of recurring "batch data" sets.

It is also possible to log all batching activities in a text file on the PC or anywhere on the local net. This file is formatted in a way that it can be easily read directly, or data can be imported into a database or spreadsheet for further handling. Accumulated weights can be easily overviewed, edited and printed on the system printer.

**PROGRAM WINDOWS USED IN BATCHVIEW**

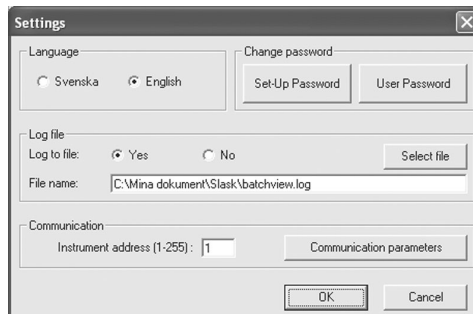
**BatchView** (Main window) Here you can run and monitor the batching sequence, edit the batch data, store/load batch data files.



**Accumulated weights** (menu Tools) Here you can monitor all accumulated weights. It is also possible to change the values here and to print all values on the system printer.



**Settings** (menu Tools) In the settings window you can select language, specify two levels of passwords, name and path of the log file, the instrument address, communication parameters etc.



**AD 3** (menu Tools) A utility window where you can check the status of the TAD 3 instrument and perform some actions on the instrument.



## Disclaimer

All product specifications and data are subject to change without notice.

Vishay Precision Group, Inc., its affiliates, agents, and employees, and all persons acting on its or their behalf (collectively, "Vishay Precision Group"), disclaim any and all liability for any errors, inaccuracies or incompleteness contained herein or in any other disclosure relating to any product.

Vishay Precision Group disclaims any and all liability arising out of the use or application of any product described herein or of any information provided herein to the maximum extent permitted by law. The product specifications do not expand or otherwise modify Vishay Precision Group's terms and conditions of purchase, including but not limited to the warranty expressed therein, which apply to these products.

No license, express or implied, by estoppel or otherwise, to any intellectual property rights is granted by this document or by any conduct of Vishay Precision Group.

The products shown herein are not designed for use in medical, life-saving, or life-sustaining applications unless otherwise expressly indicated. Customers using or selling Vishay Precision Group products not expressly indicated for use in such applications do so entirely at their own risk and agree to fully indemnify Vishay Precision Group for any damages arising or resulting from such use or sale. Please contact authorized Vishay Precision Group personnel to obtain written terms and conditions regarding products designed for such applications.

Product names and markings noted herein may be trademarks of their respective owners.